

Anti-Human IgG IgA IgM (H&L) (Fluorescein Conjugated) Secondary Antibody
Goat Polyclonal, Fluorescein (FITC)
Catalog # ASR1918**Specification****Anti-Human IgG IgA IgM (H&L) (Fluorescein Conjugated) Secondary Antibody - Product Information**

Description	Anti-HUMAN IgG IgA IgM (H&L) (GOAT) Antibody Fluorescein Conjugated
Host	Goat
Conjugate	Fluorescein (FITC)
FP Value	5.1 moles Fluorescein (FITC) per mole of IgG
Target Species	Human
Clonality	Polyclonal
Application	IF, FC
Application Note	FLISA 1:10,000-1:50,000;IF Microscopy 1:1,000-1:5,000;FlowCytometry 1:500-1:2,500
Physical State	Lyophilized
Host Isotype	IgG
Target Isotype	IgG IgA IgM
Buffer	0.02 M Potassium Phosphate, 0.15 M Sodium Chloride, pH 7.2
Immunogen	Human IgG, IgA and IgM whole molecules
Reconstitution Volume	1.0 mL
Reconstitution Buffer	Restore with deionized water (or equivalent)
Stabilizer	10 mg/mL Bovine Serum Albumin (BSA) - Immunoglobulin and Protease free
Preservative	0.01% (w/v) Sodium Azide

Anti-Human IgG IgA IgM (H&L) (Fluorescein Conjugated) Secondary Antibody - Additional Information**Shipping Condition****Ambient****Purity**

This product was prepared from polyspecific antiserum by immunoaffinity chromatography using antigens coupled to agarose beads. Assay by immunoelectrophoresis resulted in a single precipitin arc against anti-Fluorescein, anti-Goat Serum, Human IgG, Human IgA and Human IgM. This reagent is suitable for the detection of all Human isotypes and chain combinations.

Storage Condition

Store vial at 4° C prior to restoration. For extended storage aliquot contents and freeze at -20° C or below. Avoid cycles of freezing and thawing. Centrifuge product if not completely clear after standing at room temperature. This product is stable for several weeks at 4° C as an undiluted liquid. Dilute only prior to immediate use.

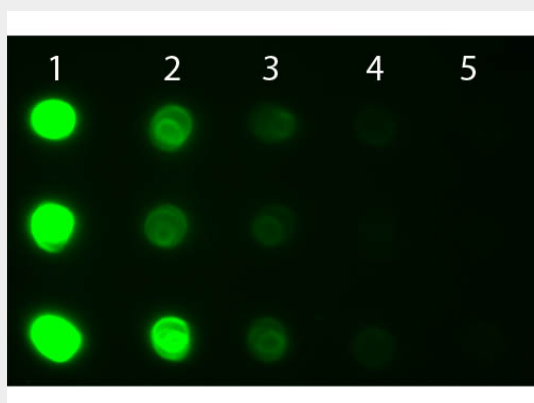
Precautions Note

This product is for research use only and is not intended for therapeutic or diagnostic applications.

Anti-Human IgG IgA IgM (H&L) (Fluorescein Conjugated) Secondary Antibody - Protein Information**Anti-Human IgG IgA IgM (H&L) (Fluorescein Conjugated) Secondary Antibody - Protocols**

Provided below are standard protocols that you may find useful for product applications.

- [Western Blot](#)
- [Blocking Peptides](#)
- [Dot Blot](#)
- [Immunohistochemistry](#)
- [Immunofluorescence](#)
- [Immunoprecipitation](#)
- [Flow Cytometry](#)
- [Cell Culture](#)

Anti-Human IgG IgA IgM (H&L) (Fluorescein Conjugated) Secondary Antibody - Images

Dot Blot of Goat anti-Human IgG IgA IgM Antibody Fluorescein Conjugated. Antigen: Row 1 - Human IgG Row 2 - Human IgA Row 3 - Human IgM. Load: Lane 1 - 100 ng Lane 2 - 33.3 ng Lane 3 - 11.1 ng Lane 4 - 3.70 ng Lane 5 - 1.23 ng. Primary antibody: n/a. Secondary antibody: Goat anti-Human IgG IgA IgM Antibody Fluorescein Conjugated at 1:1,000 for 60 min at RT. Block: MB-070 for 60 min at RT.

Anti-Human IgG IgA IgM (H&L) (Fluorescein Conjugated) Secondary Antibody - Background

This product is designed for immunofluorescence microscopy, fluorescence based plate assays (FLISA) and fluorescent western blotting. This product is also suitable for multiplex analysis, including multicolor imaging, utilizing various commercial platforms.